



Collection 24-25

Carpet Rolls  
Product Brochure



**Donaire**<sup>TM</sup>  
Carpet Rolls & Carpet Tiles

[www.donairecarpet.com](http://www.donairecarpet.com)

# Carpet Rolls

Loop pile ,Cut Pile

&

Wilton

**Donaire™**  
Carpet Rolls & Carpet Tiles

[www.donairecarpet.com](http://www.donairecarpet.com)



## Offices & Warehouses

Ahmedabad  
Hosur  
Bangalore  
Mumbai  
Hyderabad  
Chennai  
Delhi  
Kolkata  
Siliguri  
Nagpur



**Origin | Shades**

**Flow**

**Random Lines**

**Circles**

**Highway**

**Harmony**

**Zeebeedee**

**Transit**

**Vegas**

**Luxor**

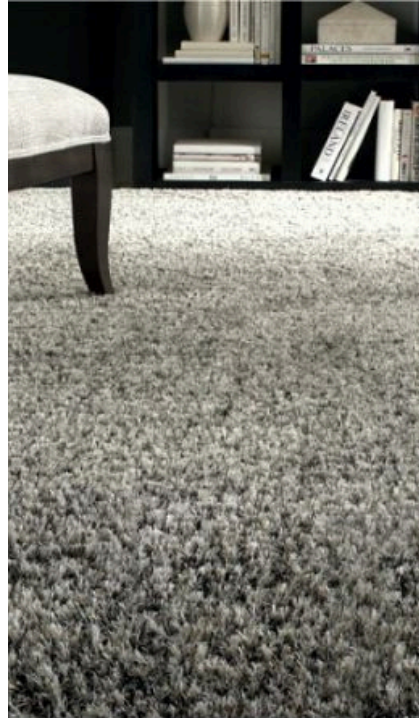
**Macau**

**Opulence**

**Nozti**

**Donaire**<sup>TM</sup>  
Carpet Rolls & Carpet Tiles

**CARPET ROLLS**



[www.donairecarpet.com](http://www.donairecarpet.com)

**COLLECTION 24-25**



# ORIGIN

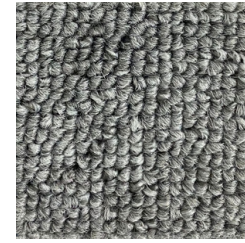
4M width

# SHADES

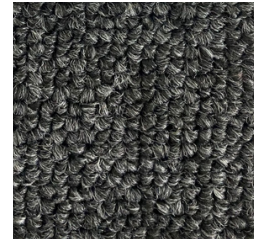
2M width

## SPECIFICATION

<b>Style</b>	ORIGIN SHADES
<b>Fibre</b>	Soluton Dyed
<b>Yarn</b>	Polypropylene
<b>Construction</b>	Loop Pile Plain
<b>Roll Width</b>	4M   2M
<b>Roll Length</b>	40 Mtr



OR|SH 07 Denim



OR|SH 08 Carbon



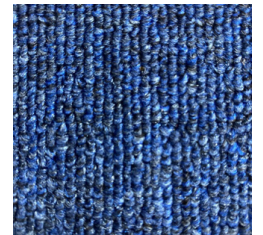
OR|SH 04 Caramel



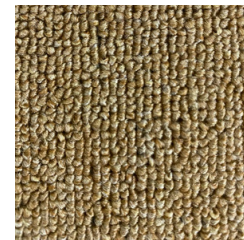
OR|SH 05 Grain



OR|SH 06 Smoke



OR|SH 02 Mid-Sea



OR|SH 03 Desert



OR|SH 01 Carnival



**Donaire**<sup>TM</sup>  
Carpet Rolls & Carpet Tiles

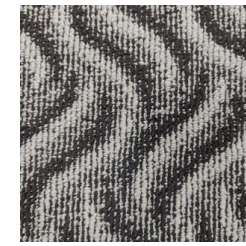
[www.donairecarpet.com](http://www.donairecarpet.com)

More than 1.25 lac sqft  
stock in each decor

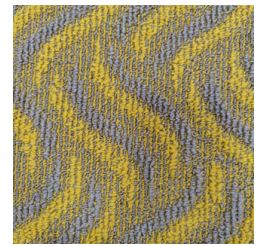


## SPECIFICATION

<b>Style</b>	FLOW
<b>Fibre</b>	Soluton Dyed
<b>Yarn</b>	Polypropylene
<b>Construction</b>	Multilevel Loop Pile
<b>Backing</b>	EQ Cushion Backing
<b>Roll Width</b>	2 M
<b>Roll Length</b>	30 Mtr



FL-01|Black & Grey



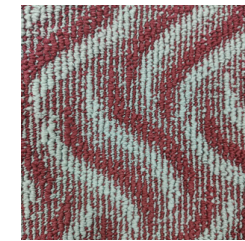
FL-02 |Mustard & Grey



FL-03 |Cream & Grey



FL-05 |Black & Red



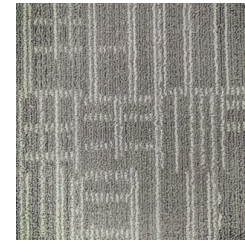
FL-06 |Maroon & Grey

" Luxury must be comfortable otherwise its not luxury "

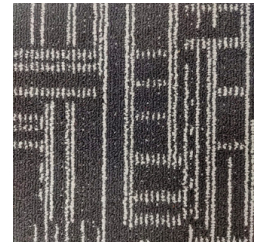
# RANDOM L I N E S

## SPECIFICATION

<b>Style</b>	RANDOM LINES
<b>Fibre</b>	Soluton Dyed
<b>Yarn</b>	Polypropylene
<b>Construction</b>	Multilevel Loop Pile
<b>Roll Width</b>	2 M
<b>Backing</b>	EQ Cushion Backing
<b>Roll Length</b>	30 Mtr



RL-01 | Light & D Grey



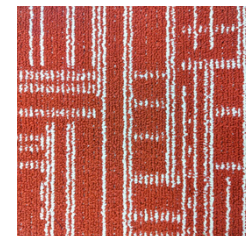
RL-02 | Black & D Grey



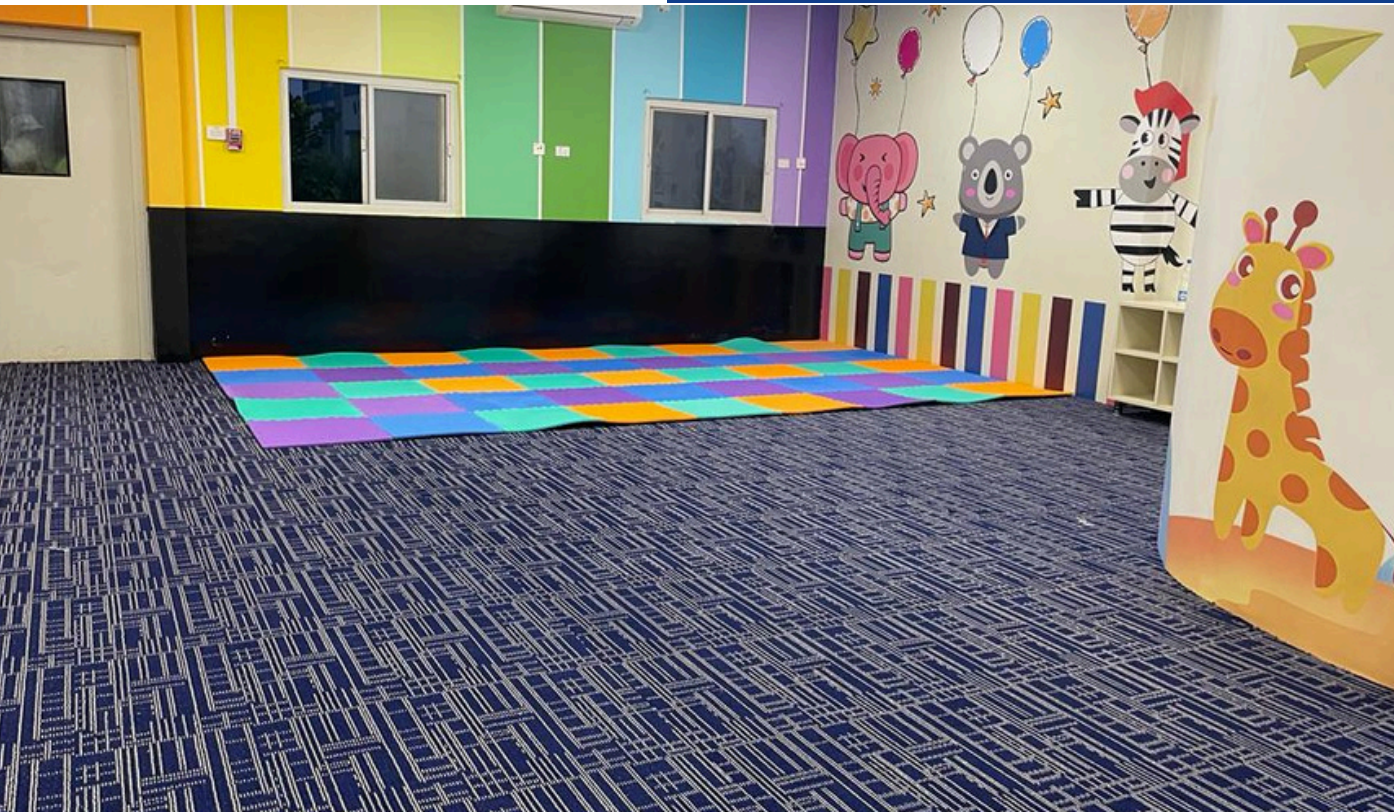
RL-03 | N Blue & L Grey



RL-04 | Coffee & Mustard



RL-05 | Rust & Beige



# CIRCLES

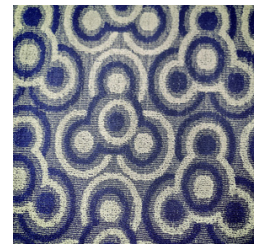
CUSHION BACKED CARPET ROLLS

## SPECIFICATION

<b>Style</b>	CIRCLES
<b>Fibre</b>	Soluton Dyed
<b>Yarn</b>	Polypropylene
<b>Construction</b>	Multilevel Loop Pile
<b>Backing</b>	EQ Cushion Backing
<b>Roll Width</b>	2 M
<b>Roll Length</b>	30 Mtr



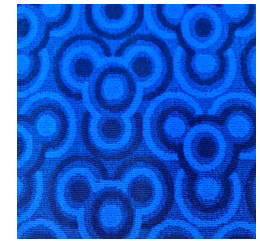
CR-01 |Black &  
D Grey



CR-02 |Navy Blue  
& D Grey



CR-03 |Red &  
D Grey



CR-04 |T Blue &  
N Blue



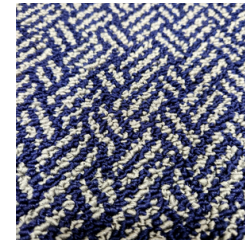
CR-05 |Mustard &  
L Grey

" No square shall  
enter in the circle  
of winners "

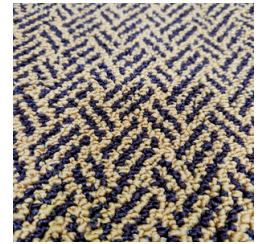
# Harmony

## SPECIFICATION

<b>Style</b>	HARMONY
<b>Backing</b>	EQCushion Backing
<b>Yarn</b>	Polypropylene
<b>Construction</b>	Level Loop Pile
<b>Roll Width</b>	2 M
<b>Roll Length</b>	30 Mtr



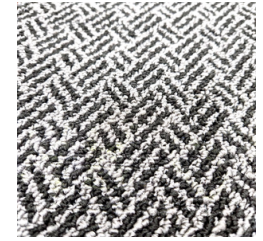
HR-01



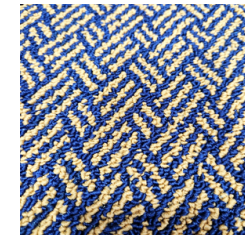
HR-02



HR-03



HR-04



HR-05



" Design is a harmony  
of rhythm and balance "



# HIGHWAY

## SPECIFICATION

<b>Style</b>	HIGHWAY
<b>Backing</b>	EQCushion Backing
<b>Yarn</b>	Polypropylene
<b>Construction</b>	Level Loop Pile
<b>Roll Width</b>	2 M
<b>Roll Length</b>	30 Mtr



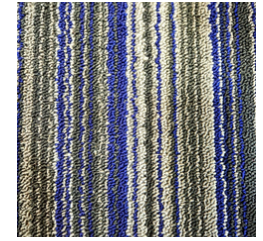
HW-01



HW-02



HW-03



HW-04



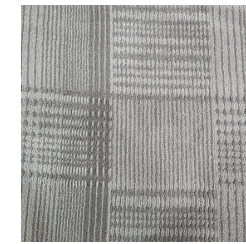
HW-05



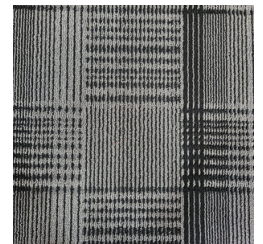
" When durability meets design "

## SPECIFICATION

<b>Style</b>	ZEEBEEDEE
<b>Backing</b>	EQCushion Backing
<b>Yarn</b>	Polypropylene
<b>Construction</b>	Multi Level Loop
<b>Thickness</b>	10 mm
<b>Roll Width</b>	2 M
<b>Roll Length</b>	30 Mtr



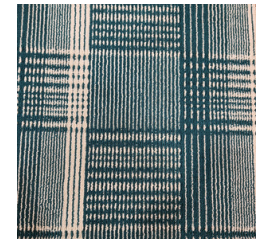
ZB-01  
L Grey/DGrey



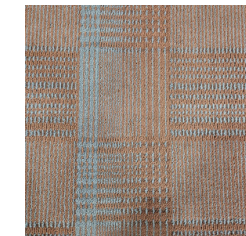
ZB-02  
Black/DGrey



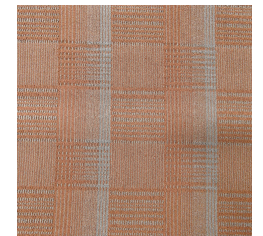
ZB-03  
N Blue/LGrey



ZB-04  
Green/Beige



ZB-05  
Brown/DGrey



ZB-06  
L Brown/DGrey

" Good Design is a language not a style "

## SPECIFICATION

<b>Style</b>	TRANSIT
<b>Fibre</b>	Soluton Dyed
<b>Yarn</b>	100% BCF Olefin
<b>Pile Weight</b>	775 gm/sqm
<b>Construction</b>	Loop Pile Graphic
<b>Roll Width</b>	4M
<b>Roll Length</b>	30 Mtr

**TRANSIT**  
Broadloom Loop Pile Carpet

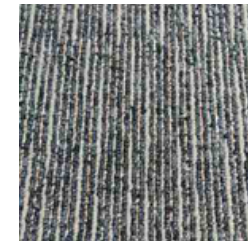
---



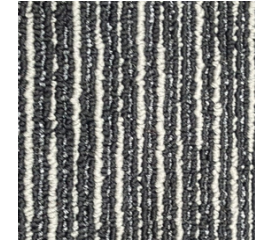
TR 02|Brown



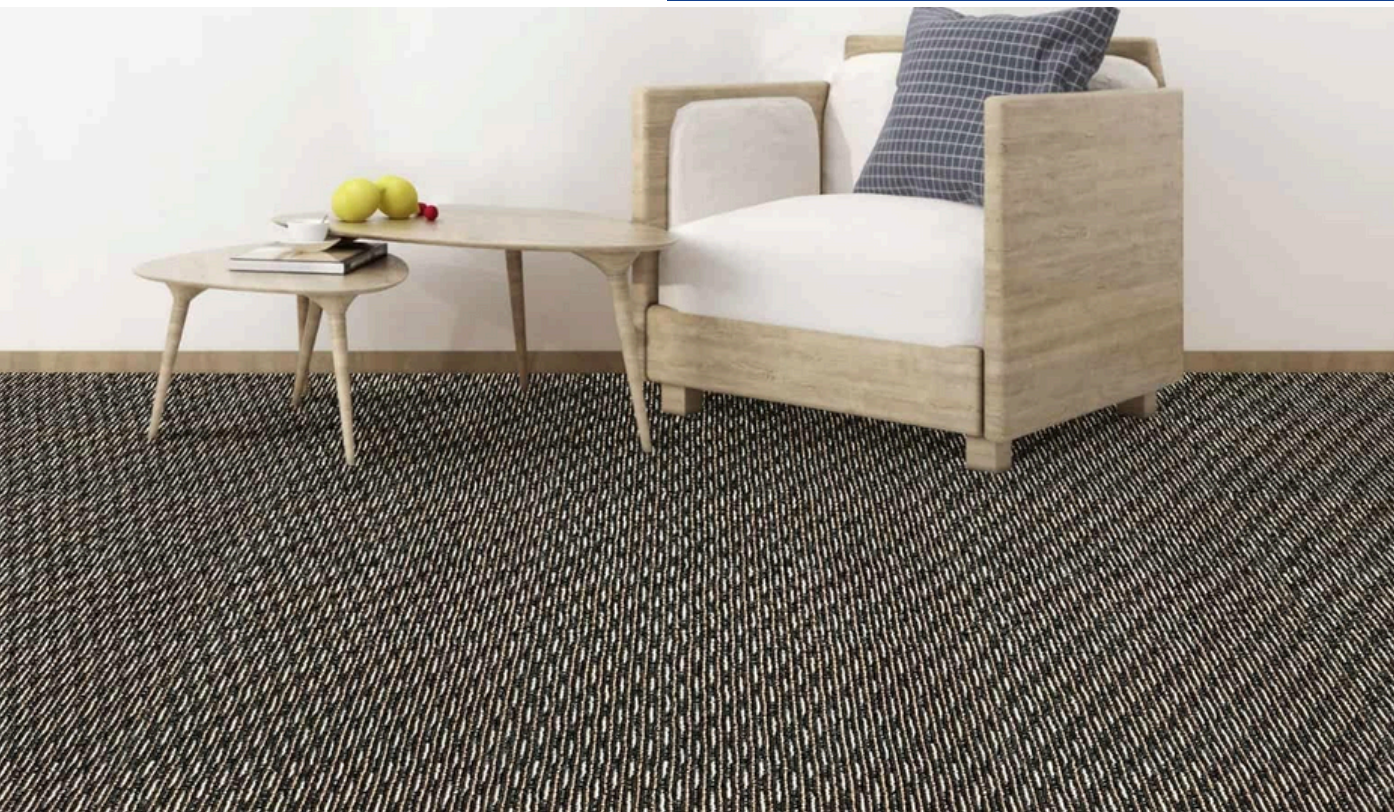
TR 04|Blue



TR 05 |  
Charcoal



TR 03 |Black



---

"Design adds value faster  
than it adds costs."

**Donaire**<sup>TM</sup>  
Carpet Rolls & Carpet Tiles

[www.donairecarpet.com](http://www.donairecarpet.com)

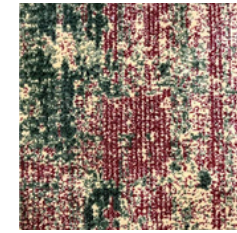
# NOZTI

WOVEN CARPET

Wilton Carpet

## SPECIFICATION

<b>Style</b>	NOZTI
<b>Yarn</b>	Advance PP Heatset
<b>Pile Weight</b>	2500 gm/sqm
<b>Construction</b>	WOVEN
<b>Backing</b>	JUTE BACKING
<b>Width</b>	4 M
<b>Pile Height</b>	13 mm
<b>Points</b>	4,80,000



NZ 11  
Red / Green



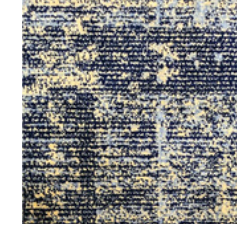
NZ 21  
Red / Gold



NZ 31  
Red / Grey



NZ 51  
Navy / Gold



NZ 41  
Navy / Grey



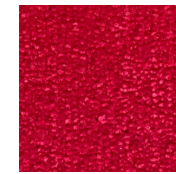
NZ 61  
Grey / Beige

# VEGAS

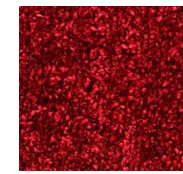
CUT PILE CARPETS

## SPECIFICATION

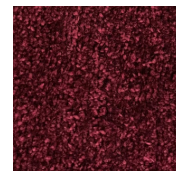
<b>Style</b>	VEGAS
<b>Fibre</b>	Camifin PP Heatset
<b>Yarn</b>	100% BCF Olefin
<b>Pile Weight</b>	850 gm/sqm
<b>Construction</b>	Level Cut Pile
<b>Roll Width</b>	4M
<b>Roll Length</b>	30 Mtr



VE 2513  
Crimson



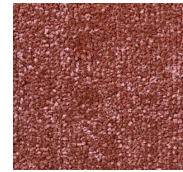
VE 2510  
Red



VE 2511  
Maroon



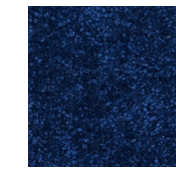
VE 2560  
Beige



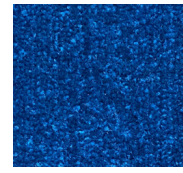
VE 2512  
Rust



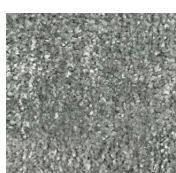
VE 2561  
Copper



VE 2520  
Deep Blue



VE 2521  
Light Blue



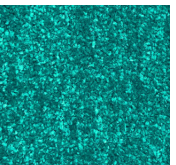
VE 2570  
Grey



VE 2501  
Khaki



VE 2550  
Umber



VE 2530  
Green

**Donaire**<sup>TM</sup>  
Carpet Rolls & Carpet Tiles

[www.donairecarpet.com](http://www.donairecarpet.com)

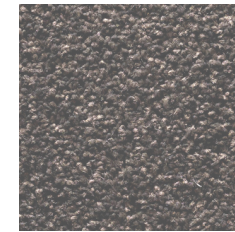
"Luxury is the balance of design, in the sense of beauty and highest quality"

SHADES OF  
**GR  
EY**

---

## SPECIFICATION

<b>Style</b>	SHADES OF GREY
<b>Yarn</b>	Heatset Nylon 6 twist
<b>Pile Weight</b>	750 gm/sqm
<b>Construction</b>	Cut Pile
<b>Primary Backing</b>	Woven Polypropelene
<b>Secondary</b>	Synthetic Jute Backing
<b>Roll Size</b>	3.66M X 35M



SOG 224



SOG 226



SOG 227



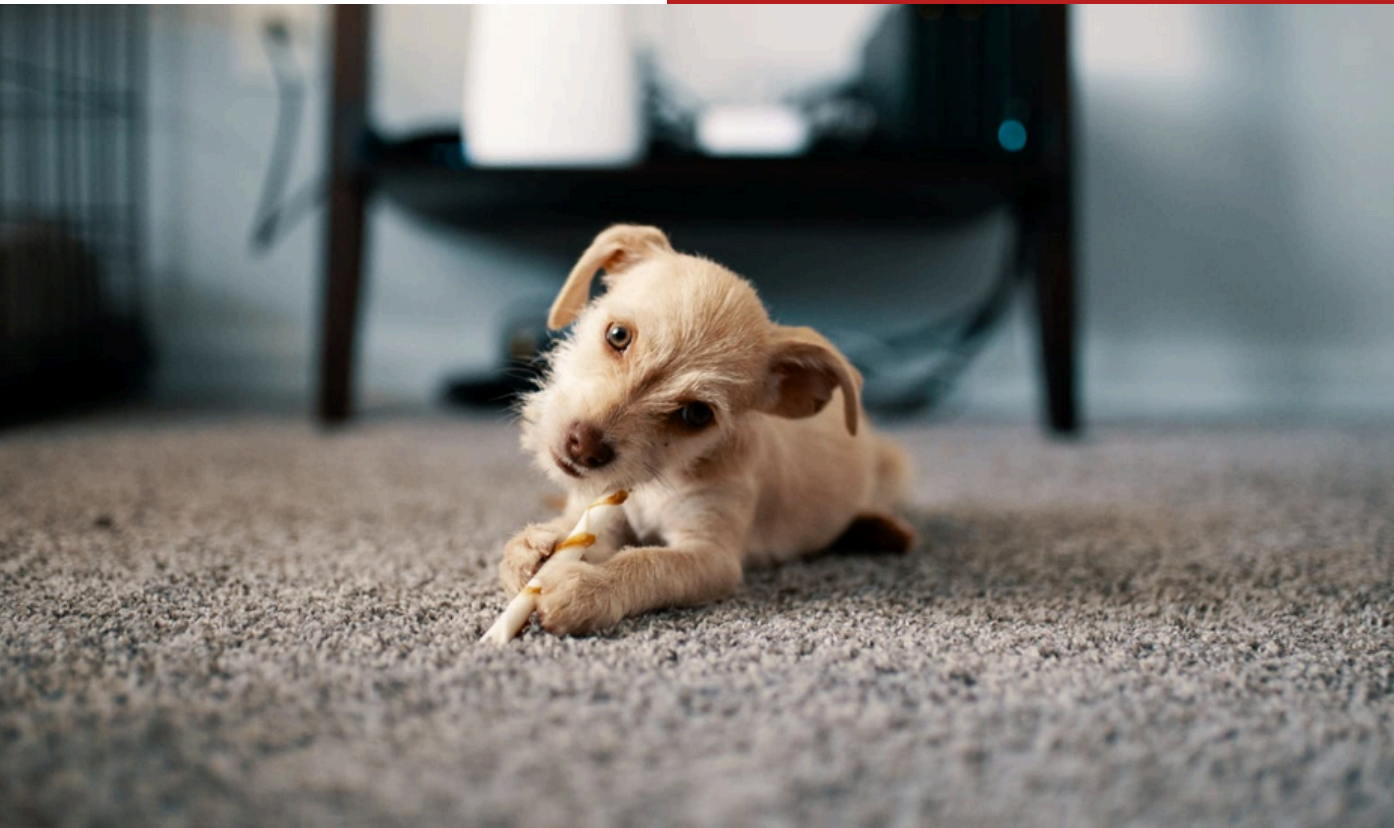
SOG 228



SOG 235



SOG 237



**Donaire**<sup>TM</sup>  
Carpet Rolls & Carpet Tiles

[www.donairecarpet.com](http://www.donairecarpet.com)

---

" Love and passion  
crafted with goodness"

# OPULENCE

---

## SPECIFICATION

<b>Style</b>	OPULENCE
<b>Fibre</b>	Heatset Fraise Polyester
<b>Pile Weight</b>	2000 gm/sqm
<b>Construction</b>	Cut Pile
<b>Primary Backing</b>	Woven Polypropelene
<b>Secondary</b>	Action Back
<b>Pile Height</b>	15 mm
<b>Roll Size</b>	30 M



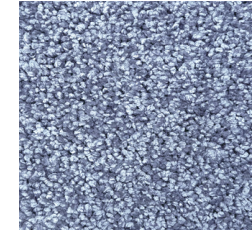
OP 138 | Mauve



OP 137 | Acron



OP 132 | Latte



OP 135 | Grey



---

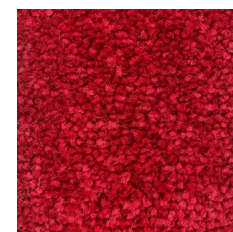
"Luxurious comfort "

# LUXOR

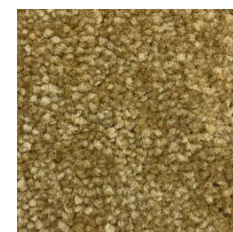
Cutpile Carpet

## SPECIFICATION

<b>Style</b>	LUXOR
<b>Fibre</b>	Camifin PP Heatset
<b>Yarn</b>	Polypropylene
<b>Pile Weight</b>	1800 gm/sqm
<b>Construction</b>	High Density Cut Pile
<b>Roll Width</b>	4M
<b>Roll Length</b>	30 Mtr



LX 01 |Red



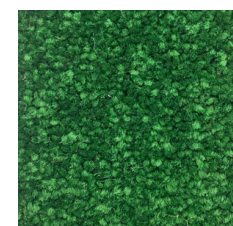
LX 02 |Beige



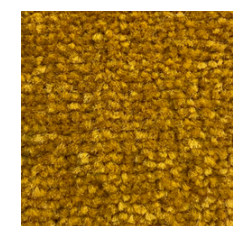
LX 04 |Maroon



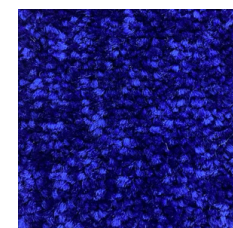
LX 03|Brown



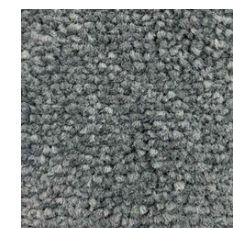
LX 05 |Green



LX 06 |Gold



LX 07 |Blue



LX 08 |Grey





# MACAU

CUTPILE CARPET

---

## SPECIFICATION

<b>Style</b>	MACAU
<b>Fibre</b>	Solution Dyed Olefin
<b>Pile Height</b>	18mm
<b>Pile Weight</b>	1800 gm/sqm
<b>Construction</b>	Cut Pile
<b>Roll Width</b>	4M
<b>Roll Length</b>	30 Mtr



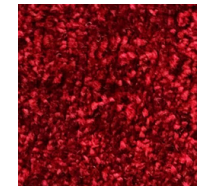
MA 5060  
FUR



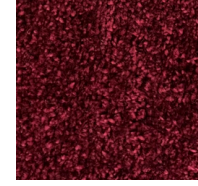
MA 5061  
WOOL



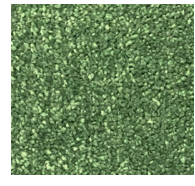
MA 5050  
FLEECE



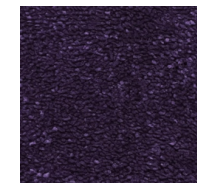
MA 5010  
RED



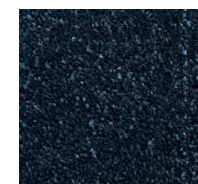
MA 5011  
MAROON



MA 5030  
SPRUCE



MA 5041  
ORCHID



MA 5020  
GLORY



---

*"Quality is remembered  
long after the price  
is forgotten"*